



L70
25°C **147,000 Hours**



B50QF
Full Cutoff Bollard
with 360° Distribution



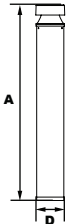
B5HQF
Full Cutoff Bollard
with 180° Shield



Shown with "S5"
Sensor



Shown with GFCI



DIMENSIONS

Diameter (D)	4 3/4" (120mm)
Height (A)	40 1/8" (1019mm)

PRODUCT DESCRIPTION

The Full Cutoff Bollards with choice of optics are designed to replace HID lighting systems up to 70w MH or HPS. These fixtures are ideal for retail centers, industrial parks, schools and universities, public transit and airports, office buildings and medical facilities.

FEATURES

Housing:
Extruded Aluminum Housing with Flush Mounting Base, Flat Top. Bollards Can Be Cut to Custom Lengths Upon Request.

Listing & Ratings:
ETL: Listed for Wet Locations, ANSI/UL 1598, 8750 IP66 Sealed LED Compartment.

Finish:
Textured Architectural Bronze or Black Powdercoat Finish Over a Chromate Conversion Coating. Custom Colors Available Upon Request.

Styles:
360° Light Distribution, 120° Shield or 180° Shield

Lens:
Clear UV-Stabilized Polycarbonate Vandal-Resistant Lens

Mounting Options:
Mounting Kit with 8" Zinc-Plated Anchor Bolts, Included.

EasyLED LED:
Aluminum Boards

Wattage:
360° Arrays: 12w & 16.6w, System: 12.9w & 18.9w
180° & 120° Arrays: 10w & 15.5w, System: 11.2w & 17w; (70w HID Equivalent)

Driver:
Electronic Driver, 120-277V, 50/60Hz; Less Than 20% THD and PF>0.90. Standard Internal Surge Protection 2kV. 0-10V Dimming Standard for a Dimming Range of 100% to 10%; Dimming Source Current is 150 Micro-amps.

Controls:
Fixtures Ordered with Factory-Installed Motion Sensor Controls are Internally Wired for Switching and/or 1-10V Dimming Within the Housing. Remote Direct Wired Interface of 1-10V Dimming is Not Implied and May Not Be Available, Please Consult Factory. Fixtures are Tested with LEDalux Controls and May Not Function Properly With Controls Supplied By Others. Fixtures are NOT Designed for Use with Line Voltage Dimmers.

Warranty:
5-Year Warranty for -40°C to +50°C Environment.
See Page 2 for Projected Lumen Maintenance Table.

ORDERING INFORMATION

EXAMPLE: B50QF1X17-U-4K-C-Z-30-SP



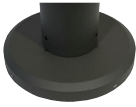
Model	Driver	CCT	Lens	Color	Height	Options
B50QF1X12=Full Cutoff Bollard - 360°, 12w B50QF1X17=Full Cutoff Bollard - 360°, 17w B5TQF1X10=Full Cutoff Bollard with 120° Shield, 10w B5TQF1X16=Full Cutoff Bollard with 120° Shield, 16w B5HQF1X10=Full Cutoff Bollard with 180° Shield, 10w B5HQF1X16=Full Cutoff Bollard with 180° Shield, 16w	U=120-277V	3K=3000K 4K=4000K 5K=5000K	C= Clear UV-Stabilized Polycarbonate Vandal-Resistant Lens	Z=Bronze B=Black C=Custom (Consult Factory)	(Leave Blank)= 40 1/8" Standard Height 30=30" Height	SF= Single Fuse (120-277V Only) DF= Double Fuse (120-277V Only) SP= Surge Protection GF1= GFCI Outlet, 15A, 120V S5= Microwave Sensor with Dimming & Remote Programming, 120-277V Only. See P17125 Spec Page for Details.

ACCESSORIES & REPLACEMENT PARTS

Mounting Accessories (Order Separately, Field Installed)

BREBASE* Bollard Retrofit Base Kit Adapts New Bollards to Most Existing Bolt Patterns. Fits all LEPC Bollards. Die Cast with Powdercoat Finish, Hardware Included. 1 1/2" Dia. x 1 1/2" H

*Specify Color: Z=Bronze, B=Black, C=Custom (Consult Factory)



BREBASE*

*Shown Mounted

Accessories (Order Separately, Field Installed)

P17126 Remote Programming Tool for P17125



P17126

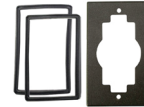
Replacement Parts (Order Separately, Field Installed)

P17125 Internal Microwave Sensor with Dimming & Remote Programming, 120-277V Only. See P17125 Spec Page for Details.

BOADP1 Adapter Plate with Gaskets for Outlet Boxes. Fits LEPC Round Bollards. Die Cast with Bronze Powdercoat Finish.

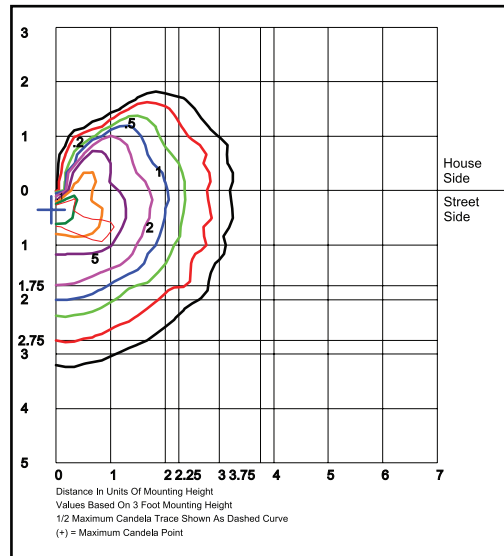
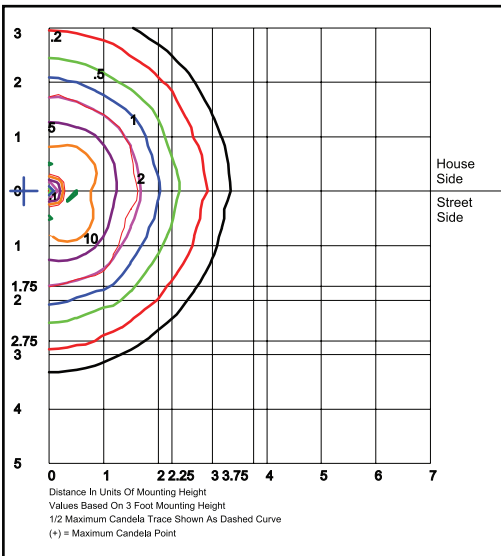


P17125



BOADP1

PHOTOMETRIC DATA



PHOTOMETRIC PERFORMANCE

Optic	Wattage (Catalog Logic)	12W (1X12)	17W (1X17)
		Input Watts	Delivered Lumens
360° B50 Models F=Type V Optic	3000K	12.9W	479
	4000K	18.1W	520
	5000K		541
	BUG Rating	B0-U1-G0	B1-U2-G0

Optic	Wattage (Catalog Logic)	10W (1X10)	16W (1X16)
		Input Watts	Delivered Lumens
180° B5H Models F=Type V Optic	3000K	11.2W	338
	4000K	17W	352
	5000K		366
	BUG Rating	B0-U1-G0	B0-U1-G0

PROJECTED LUMEN MAINTENANCE

Data shown for 4000 CCT			Compare to MH			
TM-21-11	Input Watts	Initial	25,000 Hrs	50,000 Hrs	100,000 Hrs	Calculated LED Life
L70 Lumen Maintenance @ 25°C / 77°F	All wattages up to and including 19w	1.00	0.95	0.90	0.80	147,000
L70 Lumen Maintenance @ 50°C / 122°F		1.00	0.89	0.78	0.55	67,000
L80 Lumen Maintenance @ 40°C / 104°F		1.00	0.92	0.85	0.70	66,000

NOTES:
 1. Projected per IESNA TM-21-11. Data references the extrapolated performance projections for the base model in a 25°C ambient, based on 10,000 hours of LED testing per IESNA LM-80-08.
 2. Compare to MH box indicates suggested Light Loss Factor (LLF) to be used when comparing to Metal Halide (MH) systems.